

Padma Kusha

Near Urwa Market, Mangaluru



For the
Good things
in
Life



Padma Kusha

Near Urwa Market, Mangaluru

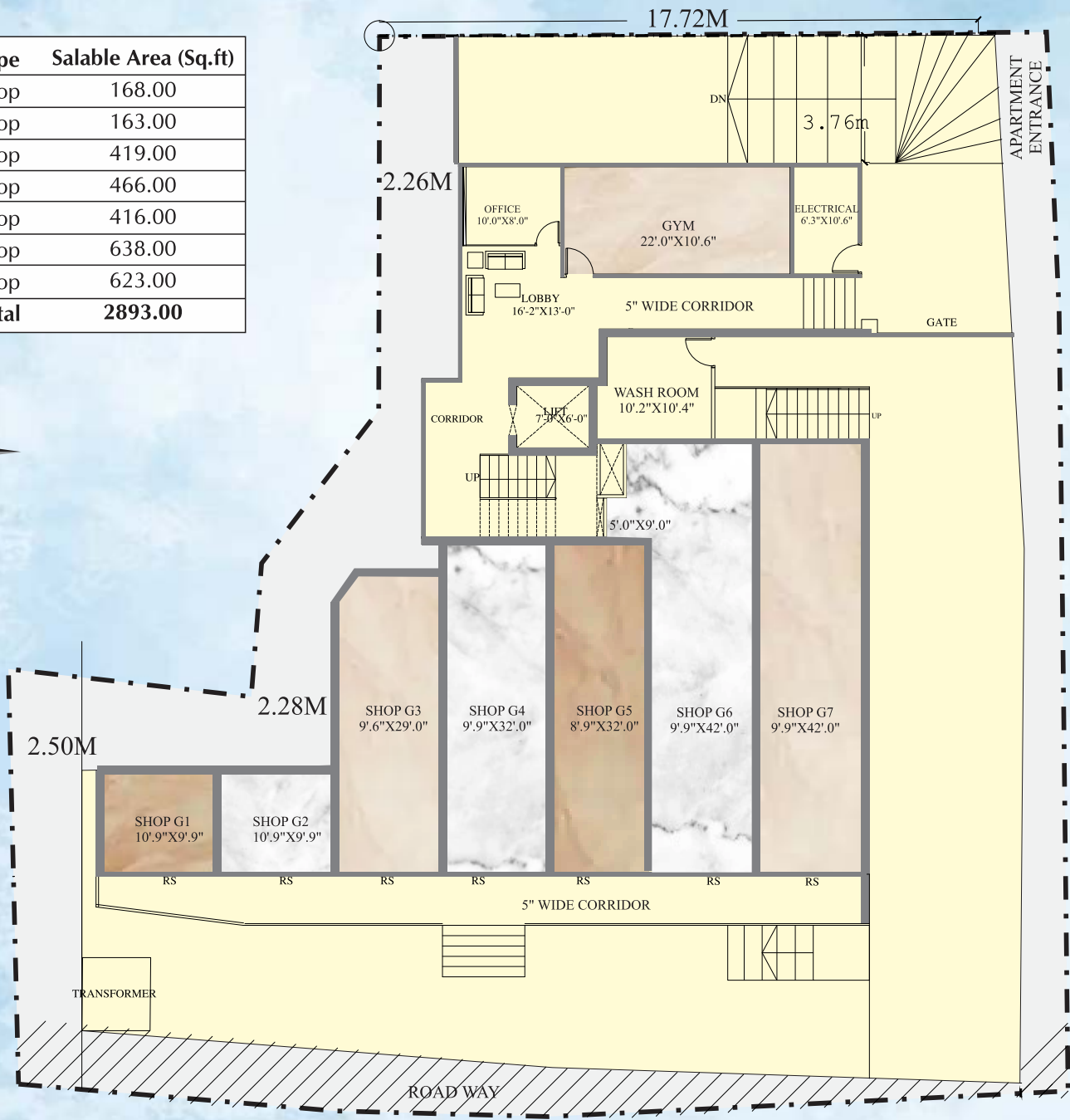


To live life at its fullest, one must enjoy the good things in life and Atharva Padma Kusha, promises you just that. A great divine location near the famous Urwa Marigudi Temple. At close vicinity to all major hubs of education, healthcare, religion, markets & places of entertainment. A great blend of modern amenities & practical conveniences for both residential and commercial spaces of the project. Atharva Padma Kusha, place to call your own to enjoy the good things in life.



Ground Floor Area

Number	Type	Salable Area (Sq.ft)
G1	Shop	168.00
G2	Shop	163.00
G3	Shop	419.00
G4	Shop	466.00
G5	Shop	416.00
G6	Shop	638.00
G7	Shop	623.00
Total		2893.00



First Floor Area

Number	Type	Salable Area (Sq.ft)
01	Shop	168.00
02	Shop	166.00
03	Shop	478.00
04	Shop	520.00
05	Shop	510.00
06	Shop	358.00
07	Shop	163.00
08	Shop	183.00
09	Shop	289.00
10	Shop	580.00
001	2BHK	1181.00
Total		4596.00



Typical Floor Area 2nd to 4th

Number	Type	Salable Area (Sq.ft)
001	2BHK	11050.00
002	3BHK	1593.00
003	2BHK	1115.00
004	2BHK	1165.00
Total		4923.00



Highlights

Residential

- Automated elevators of passengers (Residential)
- Gymnasium
- Indoor Games
- Reticulated gas connection
- Covered car parking
- CCTV surveillance system
- Generator for common area and apartment lightings

Commercial

- Generator backup with soundproof enclosure
- Security CCTV Cameras with recording
- Superior quality exterior tiles
- Car parking

Specifications

Civil Works

- Reinforced cement concrete framed structure
- all external and internal wall of laterite stone with doble plastering and chemical mix for water proofing
- Pest control treatment on the site

Sanitary Fittings in Common Toilets

- Vitrified wall cladding up to full height for toilets
- All water supply lines and drainage lines will be PVC pipes of heavy gauge
- Designer sanitary ware of Branded Companies
- Fittings in all toilets are of branded companies
- FRP flush door for toilets
- Toilets with modern fittings and fixtures

Flooring

- Vitrified the flooring for internal space
- Granite/Vitrified flooring for common area





#13-10-126/3, 1st Floor, Prakash Beedies Compound
Navabharath Circle, K.S. Rao Road, Mangalore - 575 003
Email: atharvamng@gmail.com www.atharvadevelopers.com

FOR BOOKINGS CONTACT

☎ 99020 20294, 90661 61626

COMPLETED PROJECT

