

Live in
Grandeur

ATHARVA
KANISHKA

Bejai Kapikad, Mangaluru

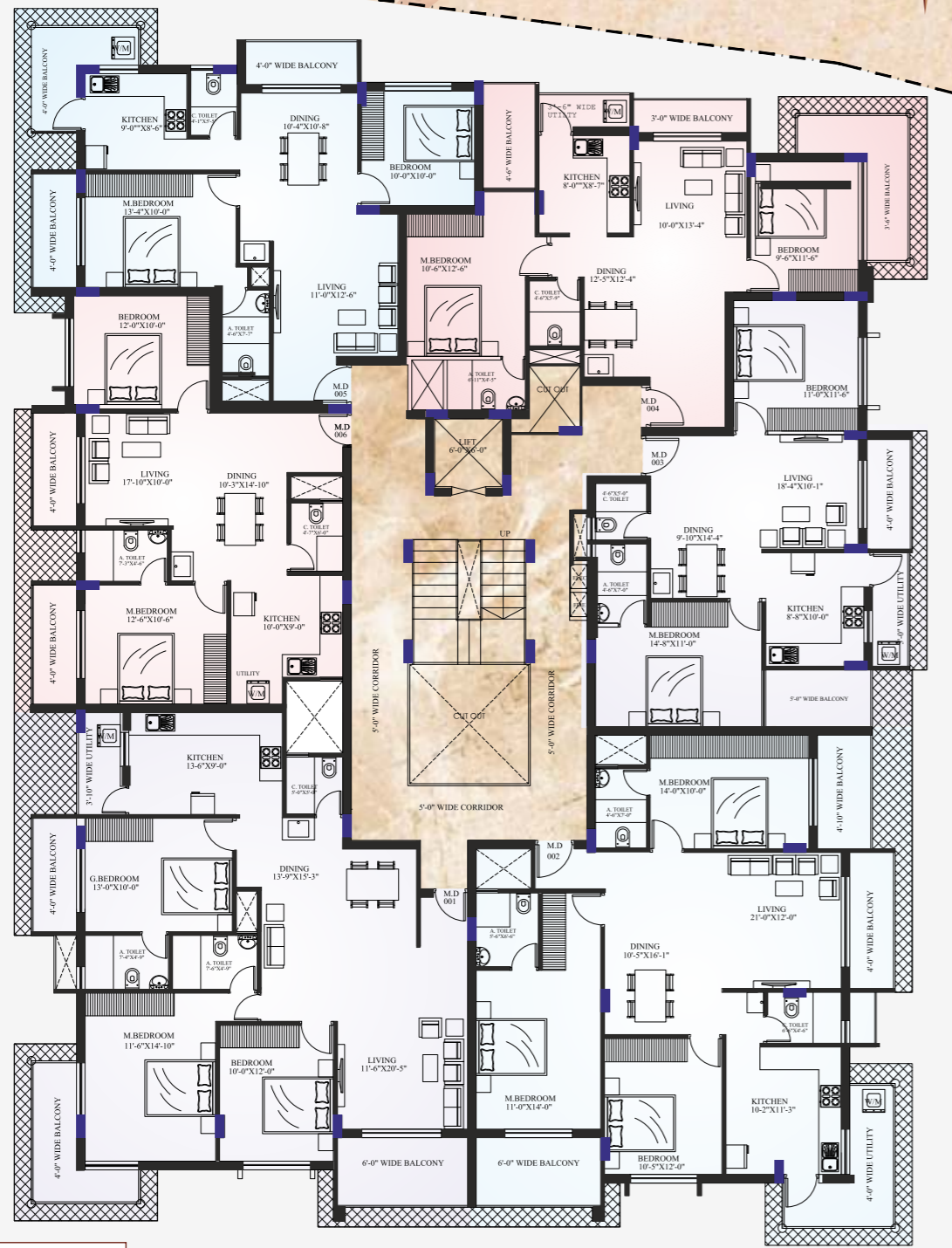
ATHARVA KANISHKA

Bejai Kapikad, Mangaluru

Live in grandeur at Atharva Kanishka, a residential apartment complex located at Bejai Kapikad, Mangaluru. Live in the heart of the city with all the conveniences near you to get the best out of life. Be it schools, colleges, hospitals, markets, transport hubs, places of entertainment & worship, you are never far away from any of these places of interest. With a soothing modern amenities & architecture, quality construction and timely completion, move into a safe haven for your loved ones where they can cherish the beautiful moments of life.



Typical floor Plan



TYPICAL FLOOR PLAN

Typical Floor Area First to Fourth

Flat No.	Type	Sale Area (in Sq.Ft.)
001	3BHK	1753.00
002	3BHK	1706.00
003	2BHK	1086.00
004	2BHK	1175.00
005	2BHK	1140.00
006	2BHK	1051.00
Total		7911.00

PROPOSED ROAD WIDE NING

Ground floor Plan



GROUND FLOOR PLAN NO. OF PARKING - 6

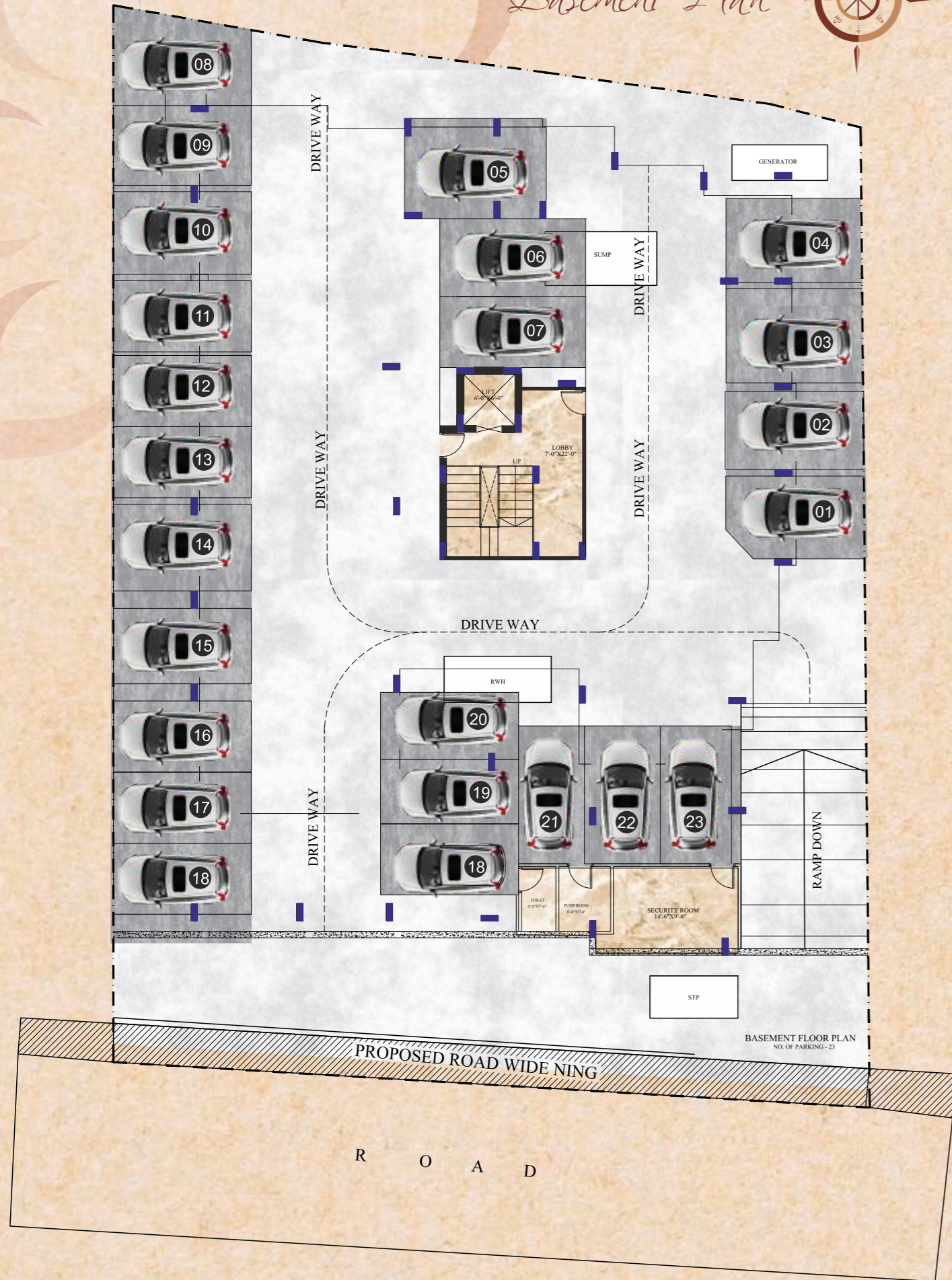
Ground Floor Area

Flat No.	Type	Sale Area (in Sq.Ft.)
001	2BHK	1076.00
002	2BHK	1079.00
003	2BHK	1062.00
004	2BHK	997.00
005	1BHK	662.00
Total		4876.00

PROPOSED ROAD WIDE NING

R O A D

Basement Plan



Highlights

- Comprises of 29 Residential Apartments
- 1 Automated Elevator
- Gymnasium
- Indoor games / Meditation Room
- Generator for Common Area and Apartment Lightings with Sound Proof Enclosure
- Covered Car Parking
- Terrace for Party
- CCTV Surveillance System



Specifications

- Granite / ceramic tile flooring for common areas
- Vitrified tile flooring inside the apartments
- Decorative melamine polished main entrance door
- Glazed tiles for toilets, dining wash and kitchen
- Granite platform with stainless steel sink in the kitchen
- C.P plumbing fittings in the toilets, kitchen and dining
- White color sanitary ware in the toilets
- Putty finished painting for walls
- Wooden door frames with melamine polished shutters for internal doors and concrete frames with fiber shutter for toilets
- Aluminum window with sliding shutters for inside apartment
- Overhead water tank and underground sump tank with required pumps



Location



ATHARVA
BUILDERS & DEVELOPERS

#13-10-126/3, 1st Floor, Prakash Beedies Compound
Navabharath Circle, K.S. Rao Road, Mangalore - 575 003
Email: atharvamng@gmail.com www.atharvadevelopers.com

FOR BOOKINGS CONTACT

 99020 20294, 90661 61626